

FROG: VII

DIGESTIVE SYSTEM.

BUCCAL CAVITY.

TONGUE.

MAXILLARY

TEETH.

VOMERINE

TEETH.

INTERNAL

NOSTRIL.

AUDITORY

ORIFICE.

PHARYNX.

GLOTTIS.

ESOPHAGUS.

STOMACH.

SMALL INTESTINE.

LARGE INTESTINE.

CLOACA.

LIVER.

GALL BLADDER.

HEPATIC DUCT.

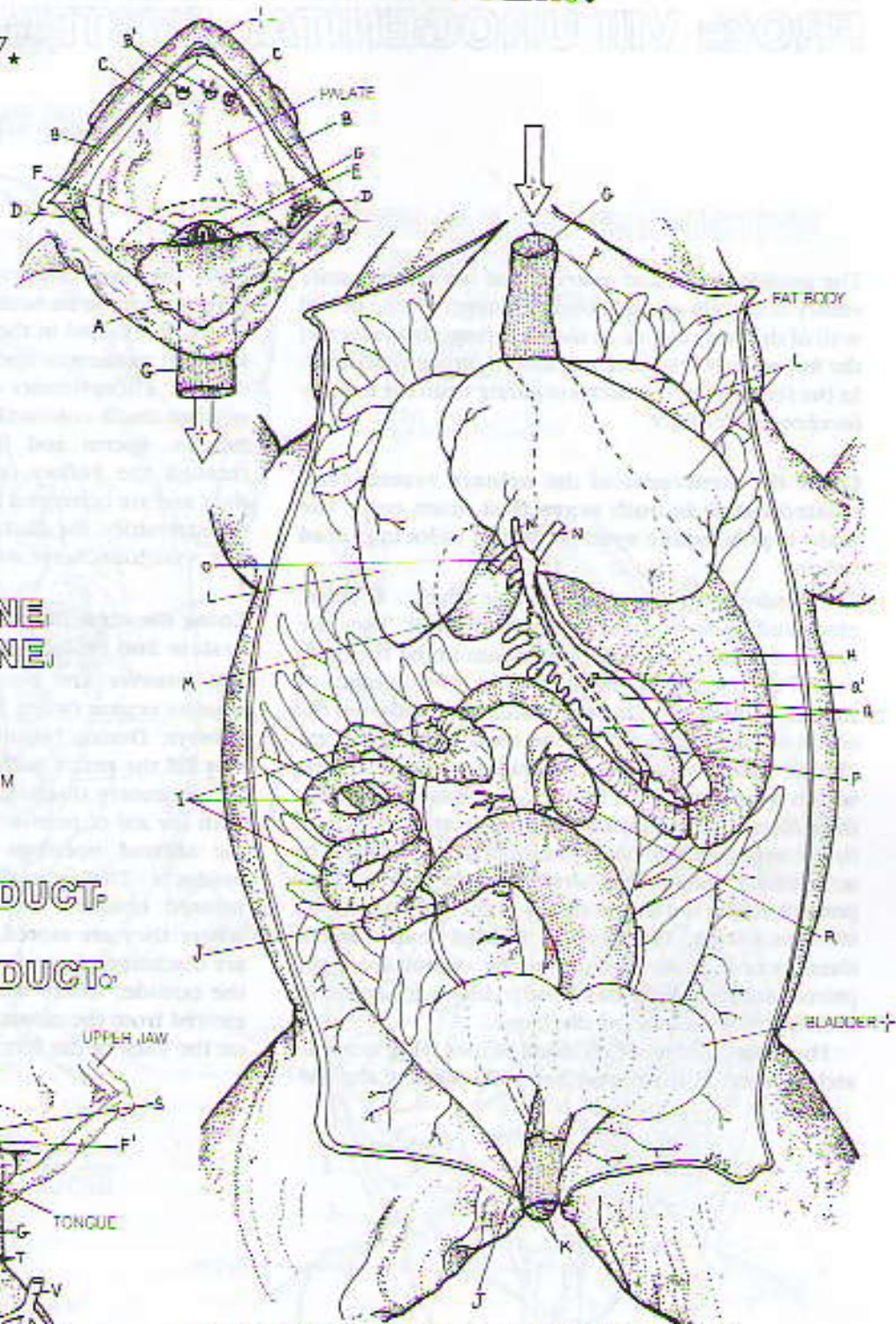
CYSTIC DUCT.

COMMON BILE DUCT.

PANCREAS.

PANCREATIC DUCT.

SPLEEN.



RESPIRATORY SYSTEM.

GLOTTIS.

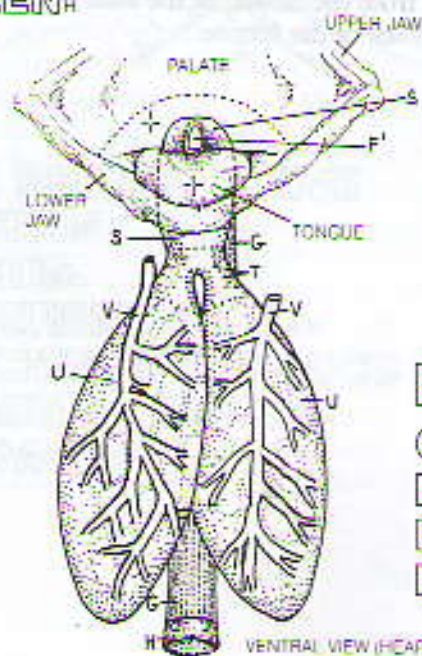
LARYNX.

BRONCHUS.

LUNG.

PULMONARY

VESSELS.



VENTRAL VIEW (HEART REMOVED)